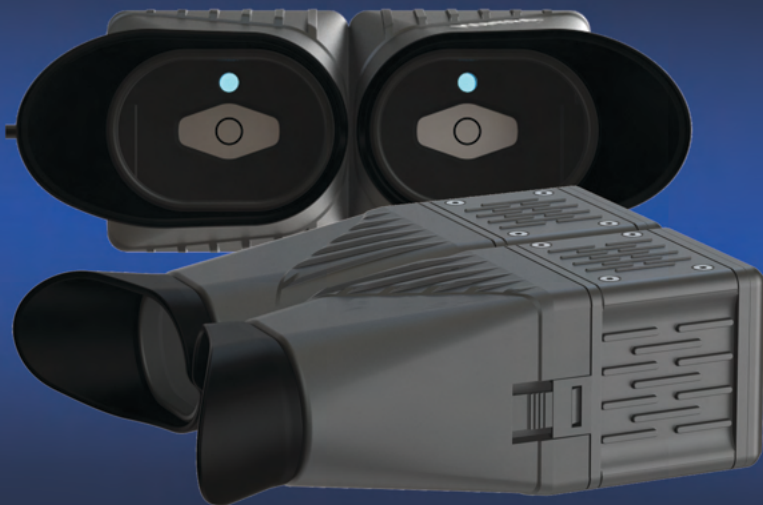


# MATIS DX

## Technical Specifications



**OS**  
Windows 32/64-Bit,  
Android, Linux,  
Embedded RTOS

**Interface**  
USB2.0 and USB-IF  
Certified

**Device Driver**  
WHQL Certified

**Biometric Data  
Interchange Format**  
ISO 19794-6 for IRIS  
Image,  
ISO 29794-6 for image  
quality

**IP Grade**  
IP 54

**Hardware**  
Operating Temperature-  
-30 to +70 Deg C  
Operating Humidity-  
10-90% RH, Non-Condensing

**IRIS Sensor**  
Dual IRIS Capture  
IRIS Diameter - >210 Pixel

**Certifications\***  
EMI / EMC Compliance - CE  
& FCC Part 15B Class A  
Environmental, Health and  
Safety - RoHS

**Sensor Capture**  
Spatial Resolution -  
60 % @ 4.0 Lp/mm

**Pixel Resolution-**  
>19 Pixel/mm

**Frame Rate -**  
>5 Frames/Sec,  
Continuous Capture

**Scan Type -**  
Progressive

**Sensor SNR -**  
>36 dB

**Capture Mode -**  
Auto Capture with Built-in  
Quality Check

**Illumination -**  
Near Infra Red (NIR)

**Exposure Time -**  
<33ms

**Encryption -**  
PKI (2048 Bit), AES (256 Bit)  
& SHA256

**Battery**  
Current Consumption -  
Operating : < 200 mA (Max)  
Stand By : < 40 mA (Max)  
Operating Voltage -  
5V +/- 5% (USB Powered  
Device)